

Great North Walk – Mt Kuring-gai to Hawkesbury River – 3 Day Hike

Day 1 – Mt Kuring-gai Train Station to Ridge Top Campsite (above Berowra Waters) – 12.6km

Egress Point at Berowra Waters (road access)

Access to campsite from Turner Rd (800m walking)

Day 2 - Ridge Top Campground (above Berowra Waters) to Brookly Dam Campsite – 13.6km

Egress at Cowan Station

Access to campsite from Hawkesbury River (2.8km)

Day 3 – Brookly Dam Campsite to Hawkesbury River Train Station via Sandy Bay Detour – 6.4km

TOTAL 32.7km

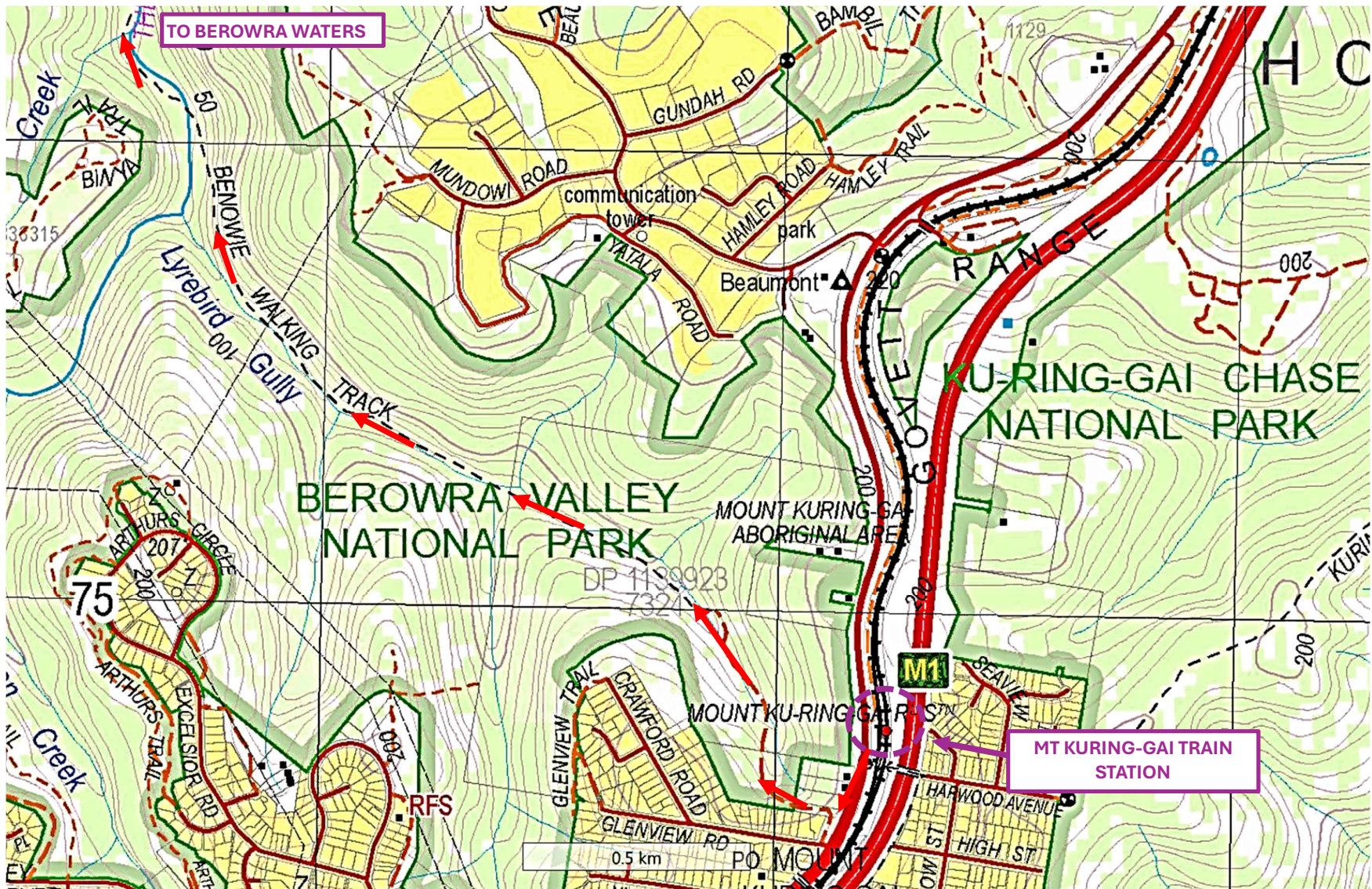
Contact Numbers

Night 1 – Caroline Jerrems (Nathan) – 0402 410 269

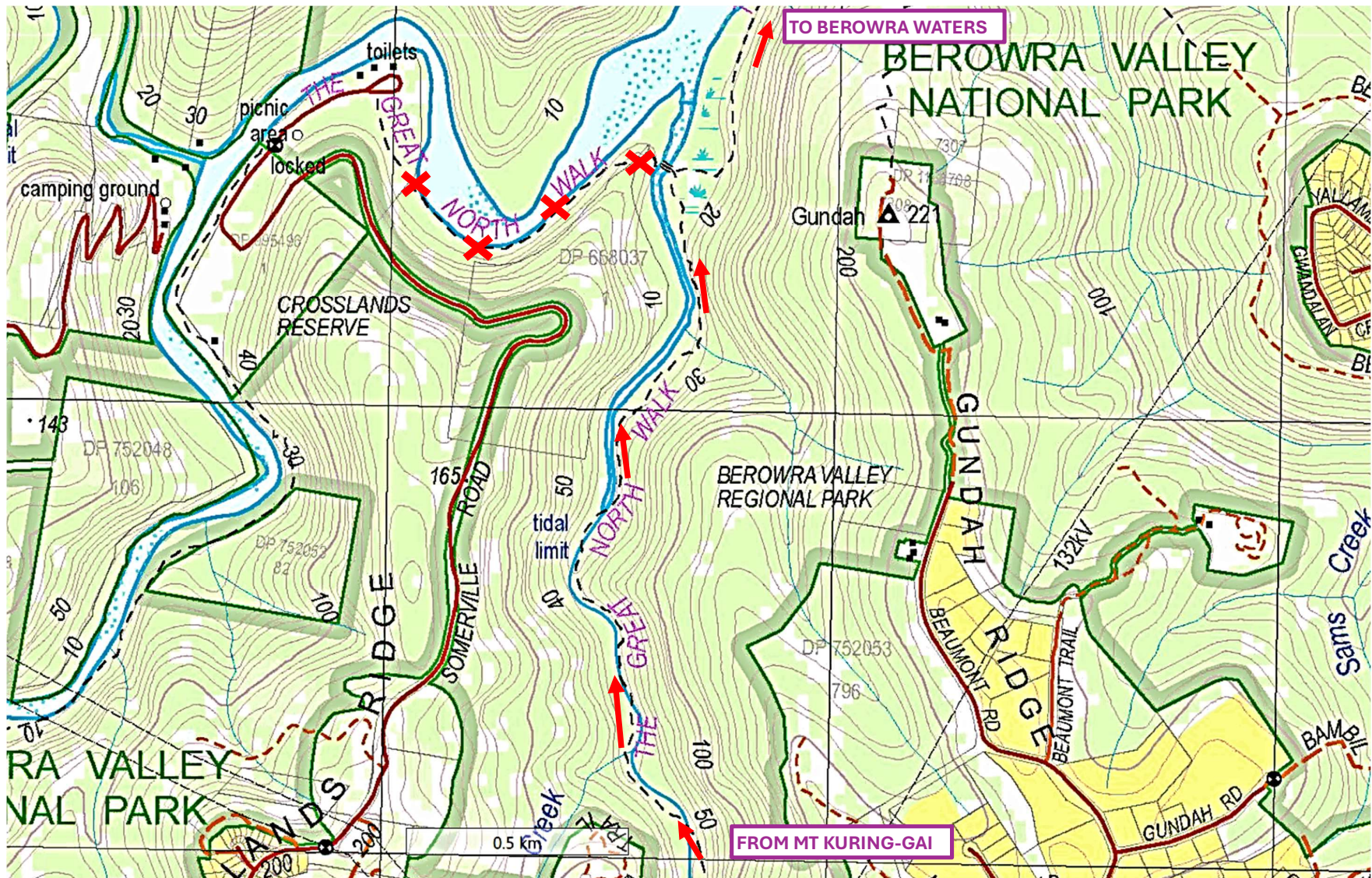
Night 2 – Clare Gaunt (Oliver) – 0435 602 639

External Support – Matt Gaunt (Oliver) – 0400 848 091

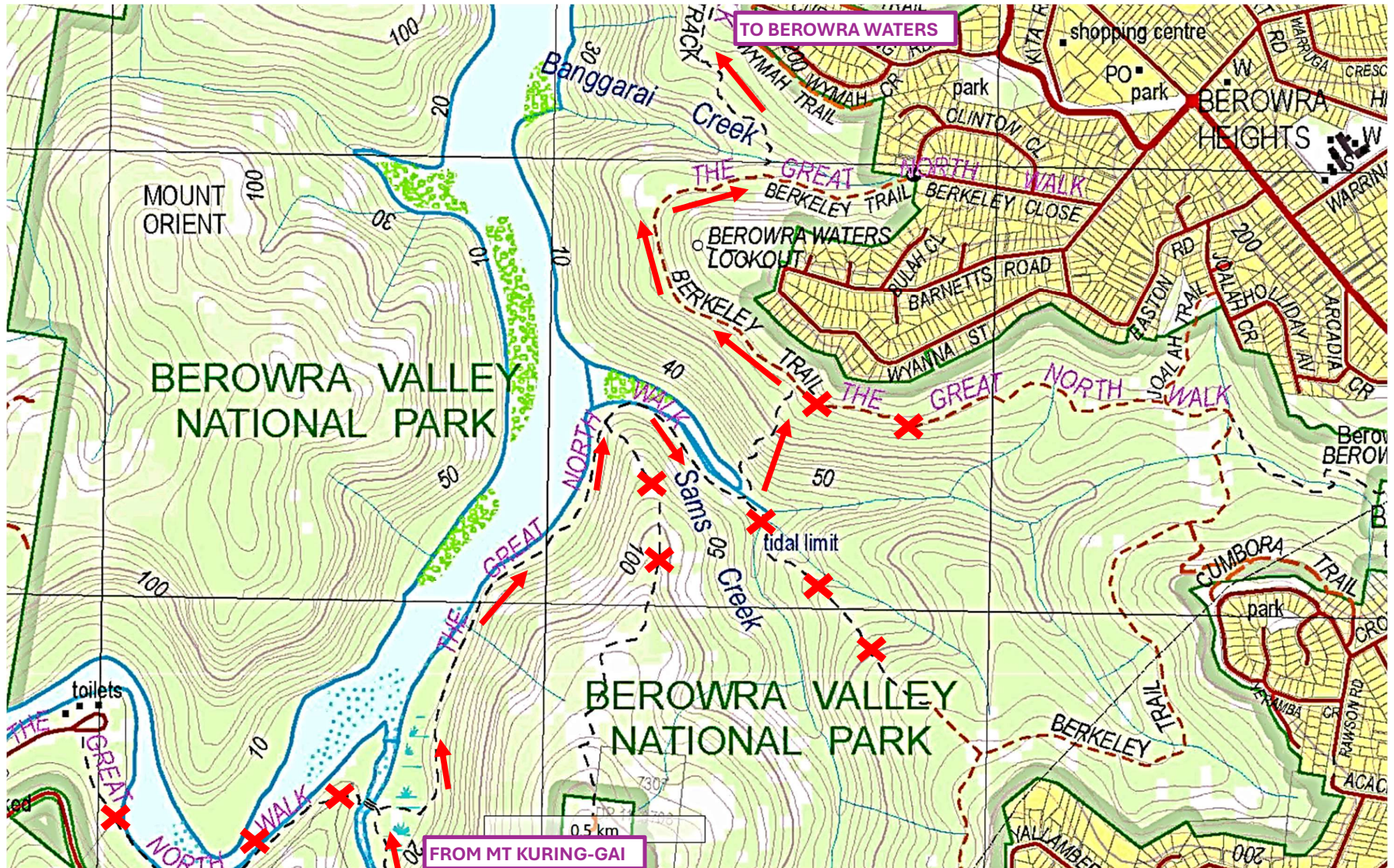
Great North Walk – Mt Kuring-gai to Hawkesbury River – 3 Day Hike



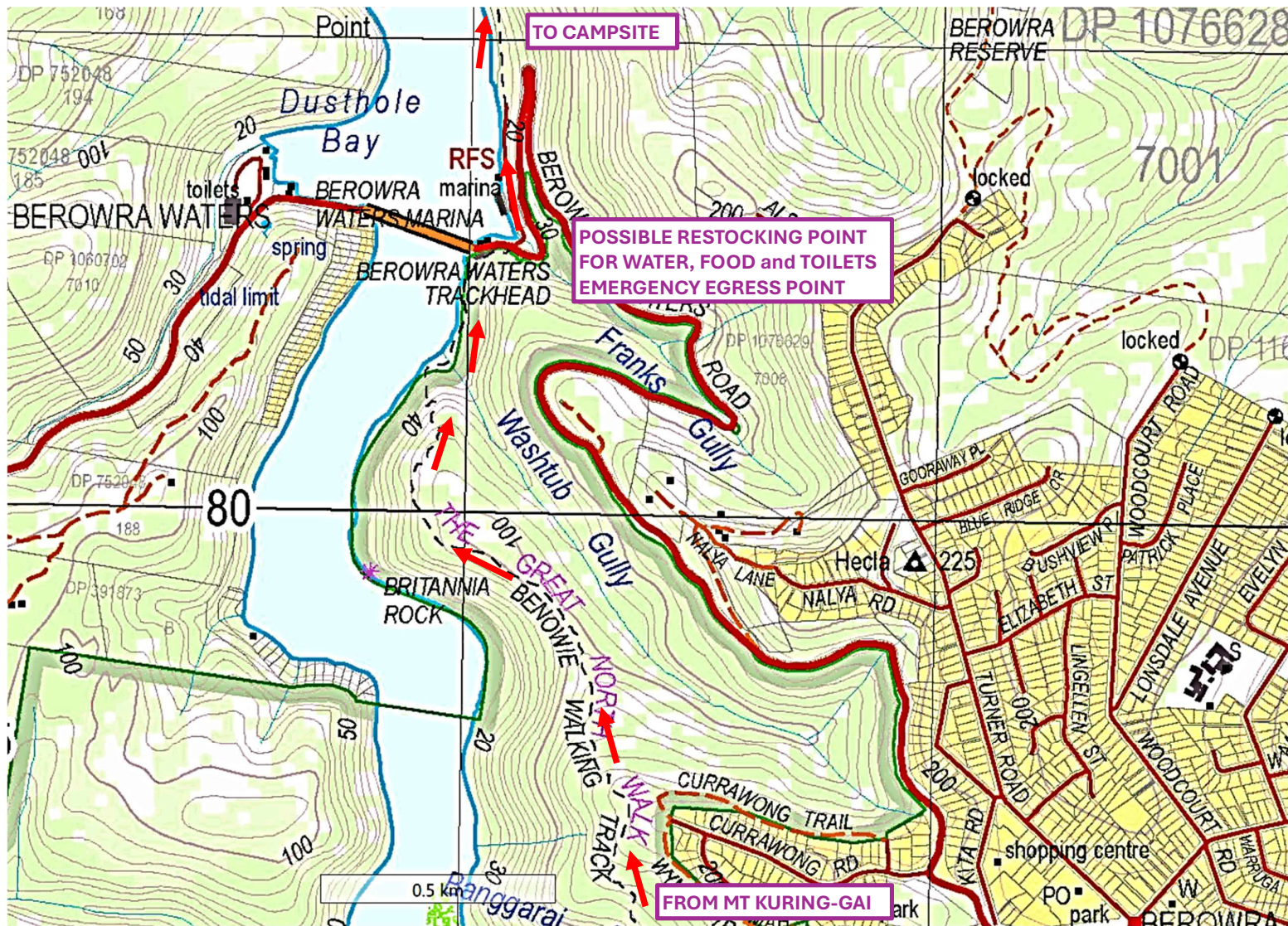
Great North Walk – Mt Kuring-gai to Hawkesbury River – 3 Day Hike



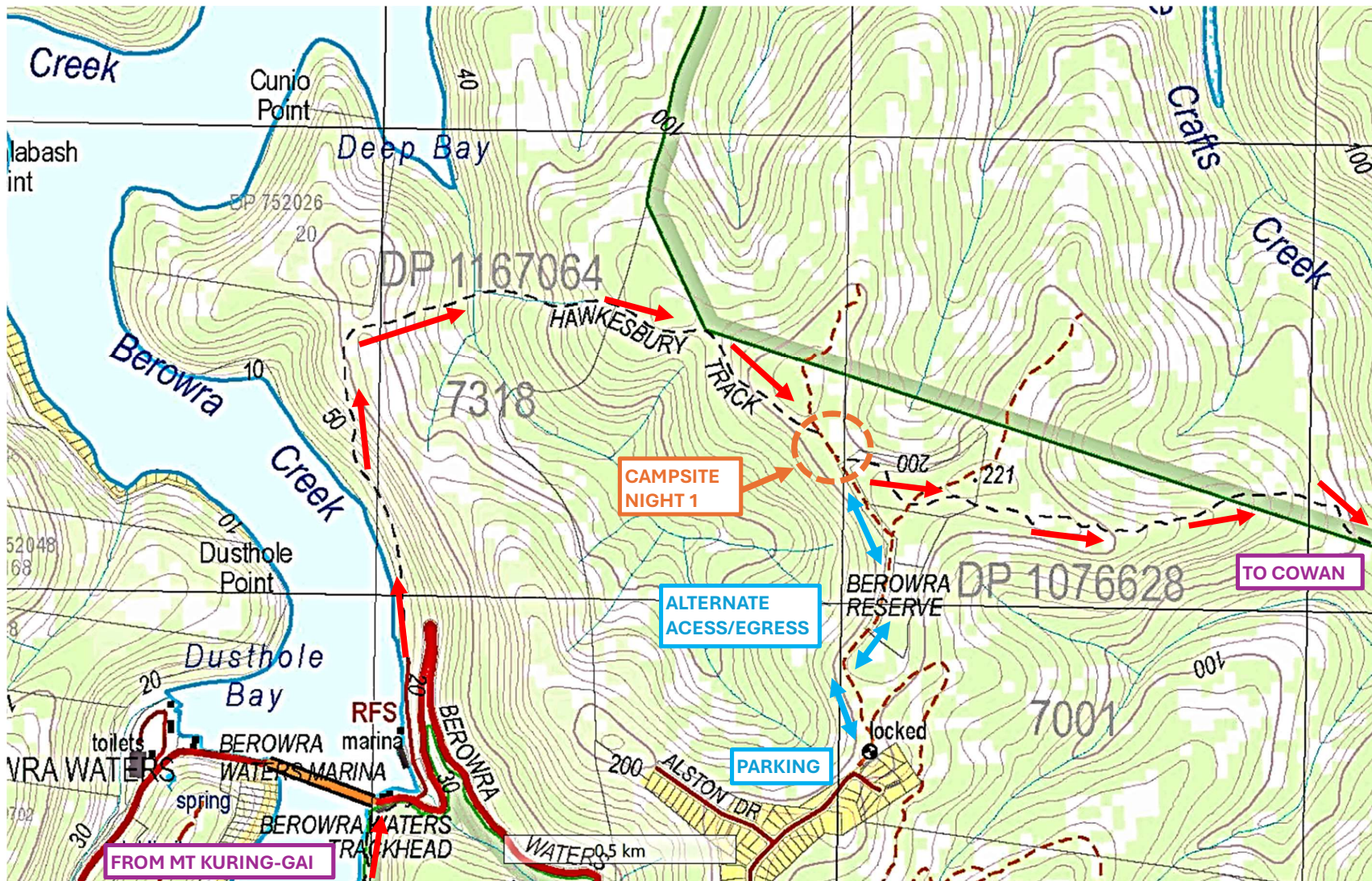
Great North Walk – Mt Kuring-gai to Hawkesbury River – 3 Day Hike



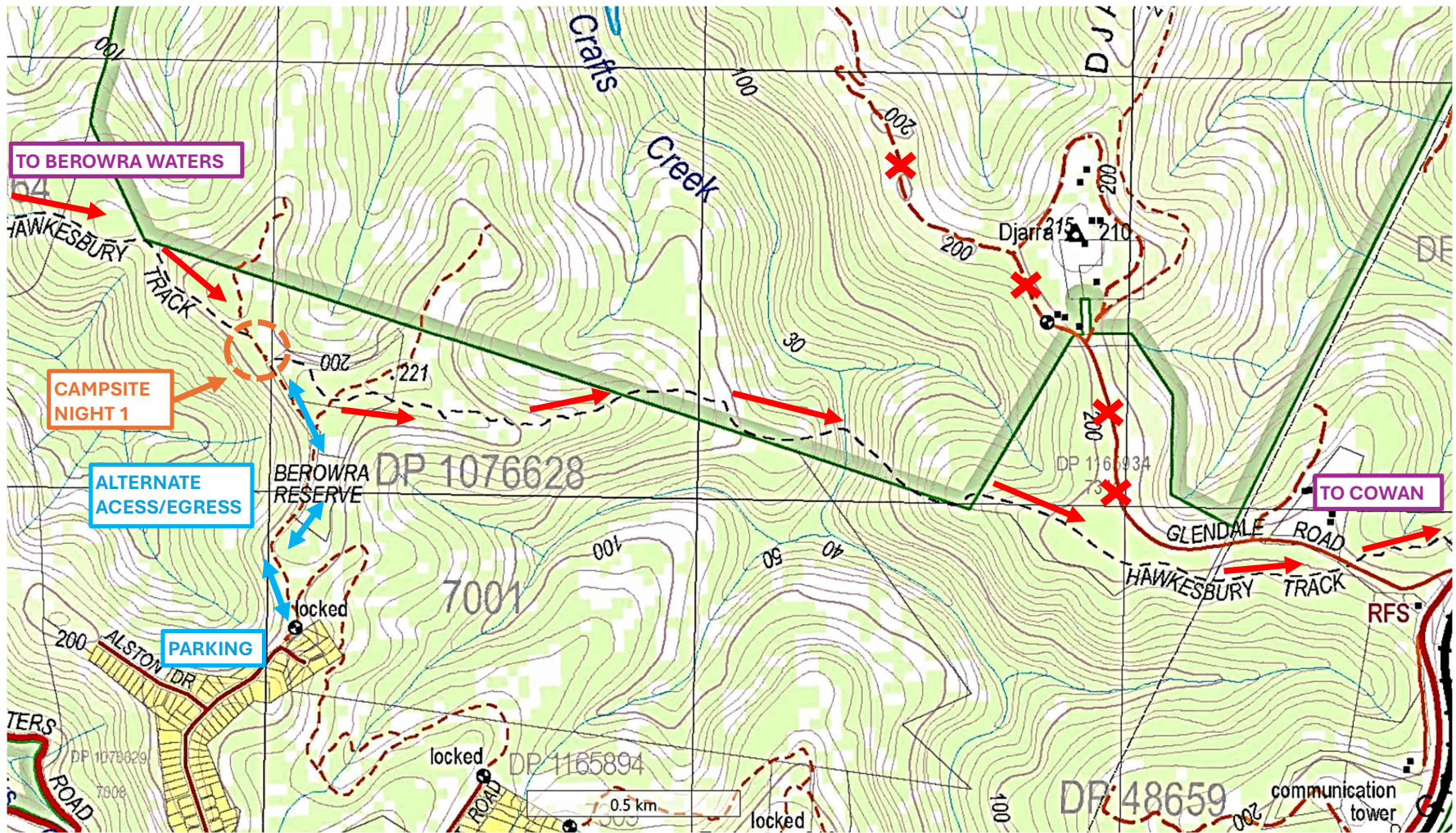
Great North Walk – Mt Kuring-gai to Hawkesbury River – 3 Day Hike



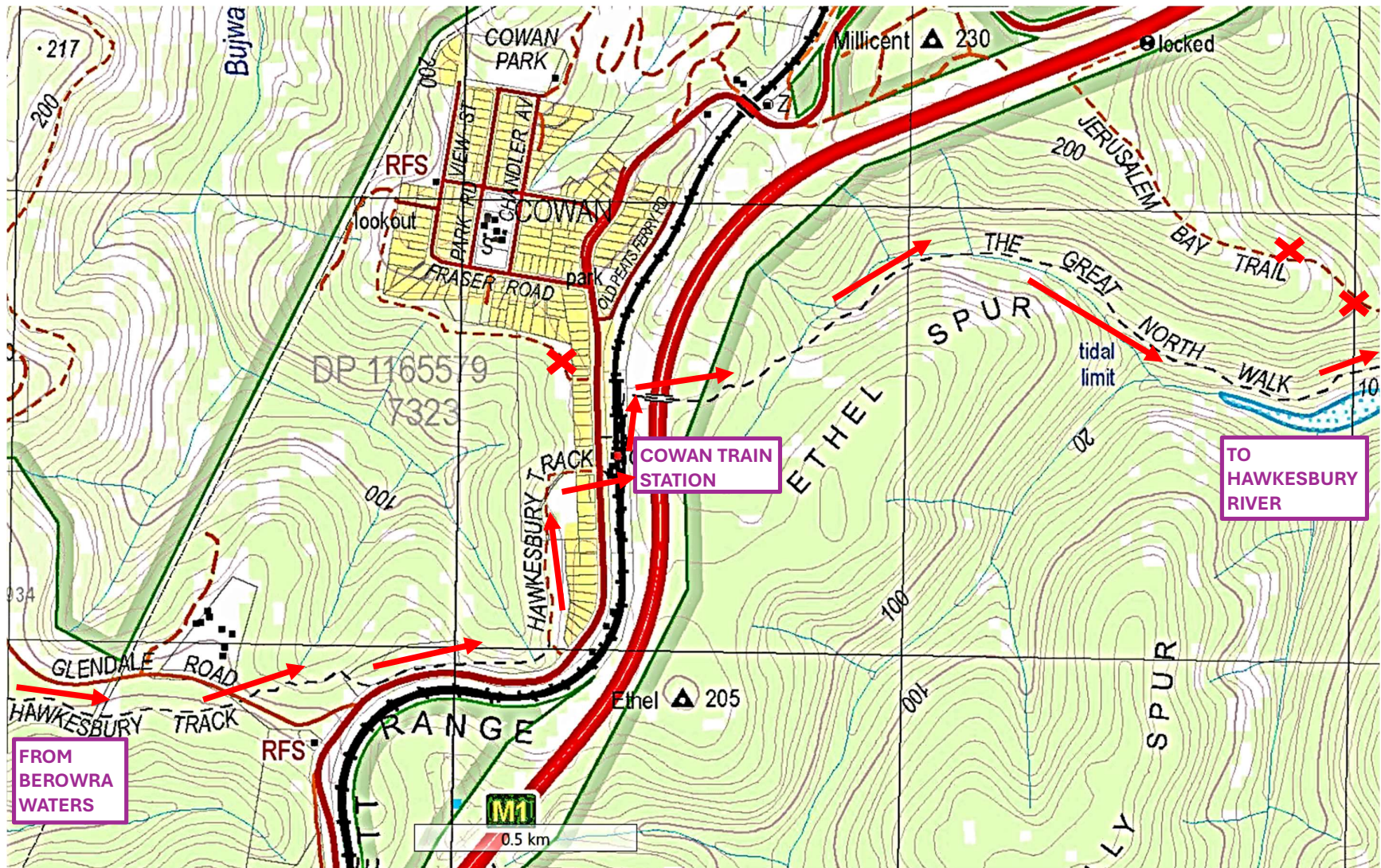
Great North Walk – Mt Kuring-gai to Hawkesbury River – 3 Day Hike



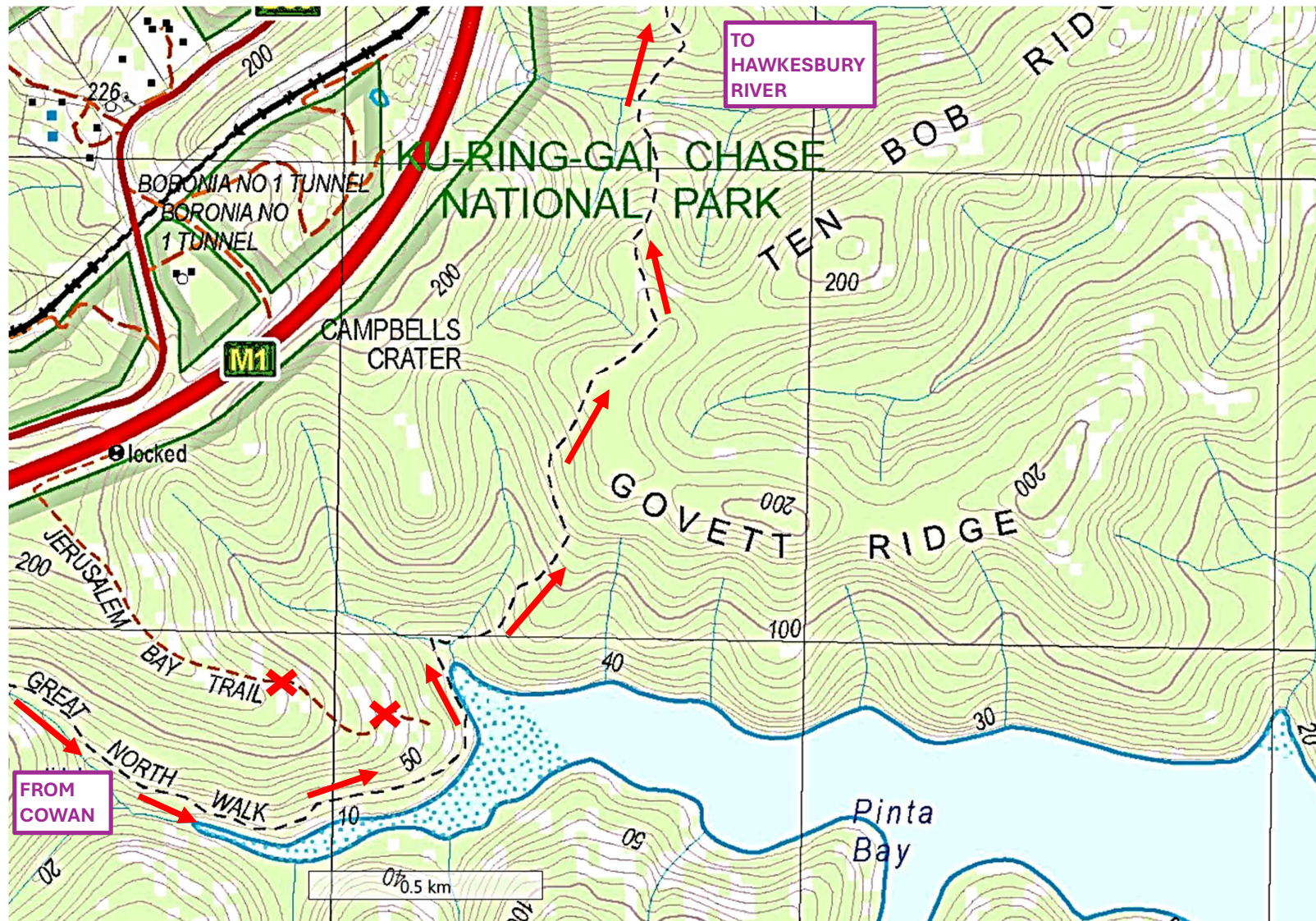
Great North Walk – Mt Kuring-gai to Hawkesbury River – 3 Day Hike



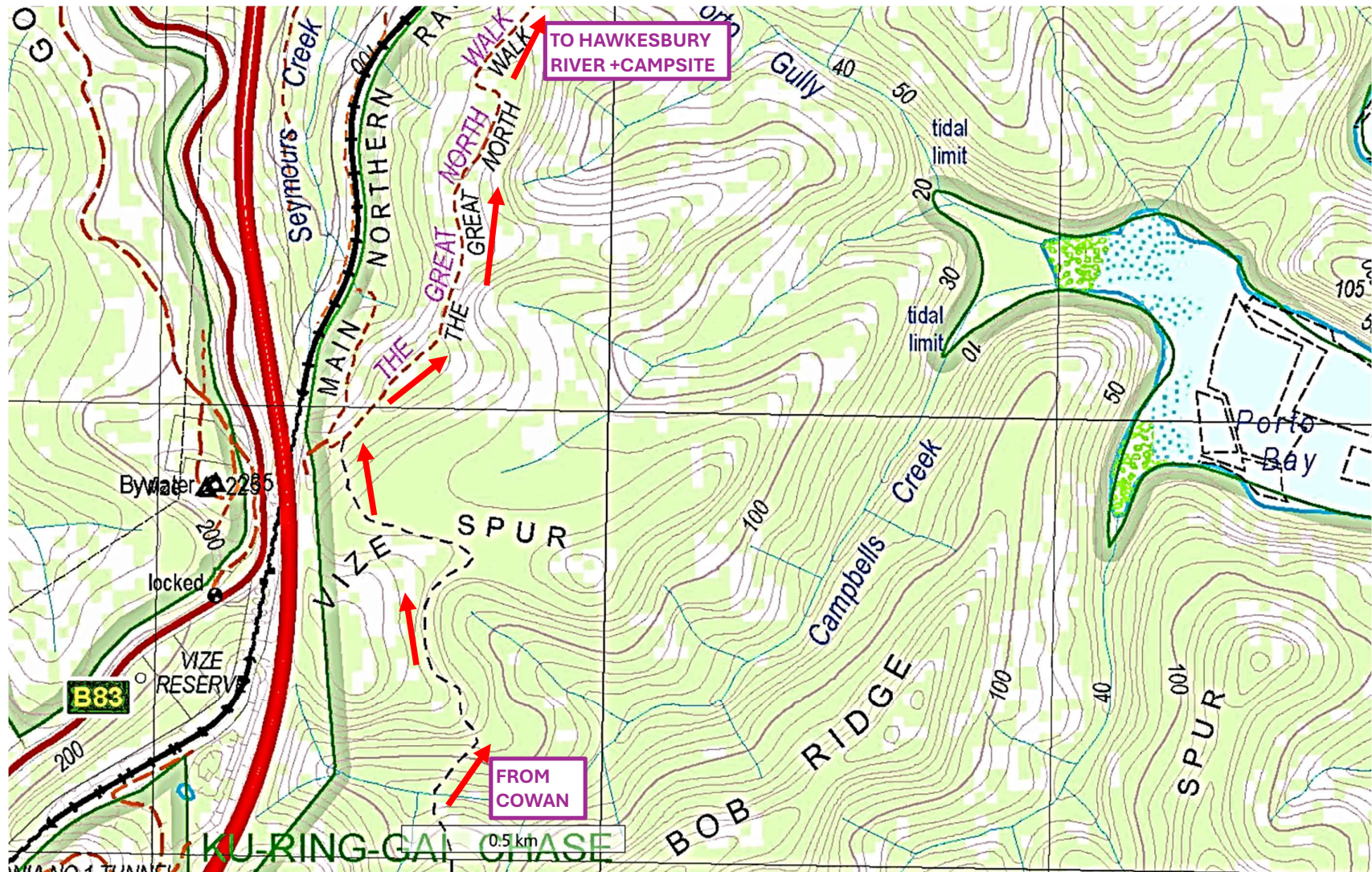
Great North Walk – Mt Kuring-gai to Hawkesbury River – 3 Day Hike



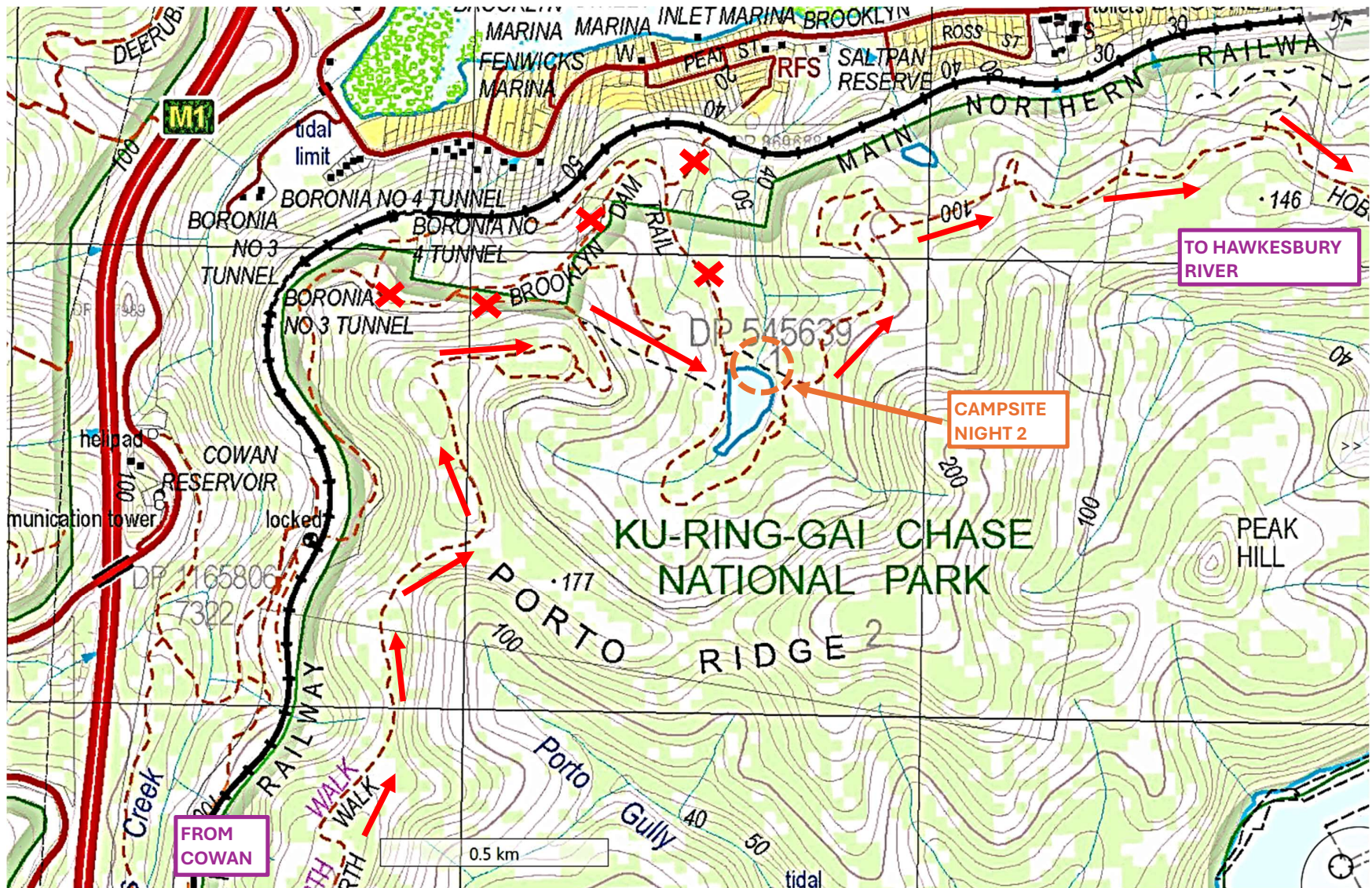
Great North Walk – Mt Kuring-gai to Hawkesbury River – 3 Day Hike



Great North Walk – Mt Kuring-gai to Hawkesbury River – 3 Day Hike



Great North Walk – Mt Kuring-gai to Hawkesbury River – 3 Day Hike



Great North Walk – Mt Kuring-gai to Hawkesbury River – 3 Day Hike

